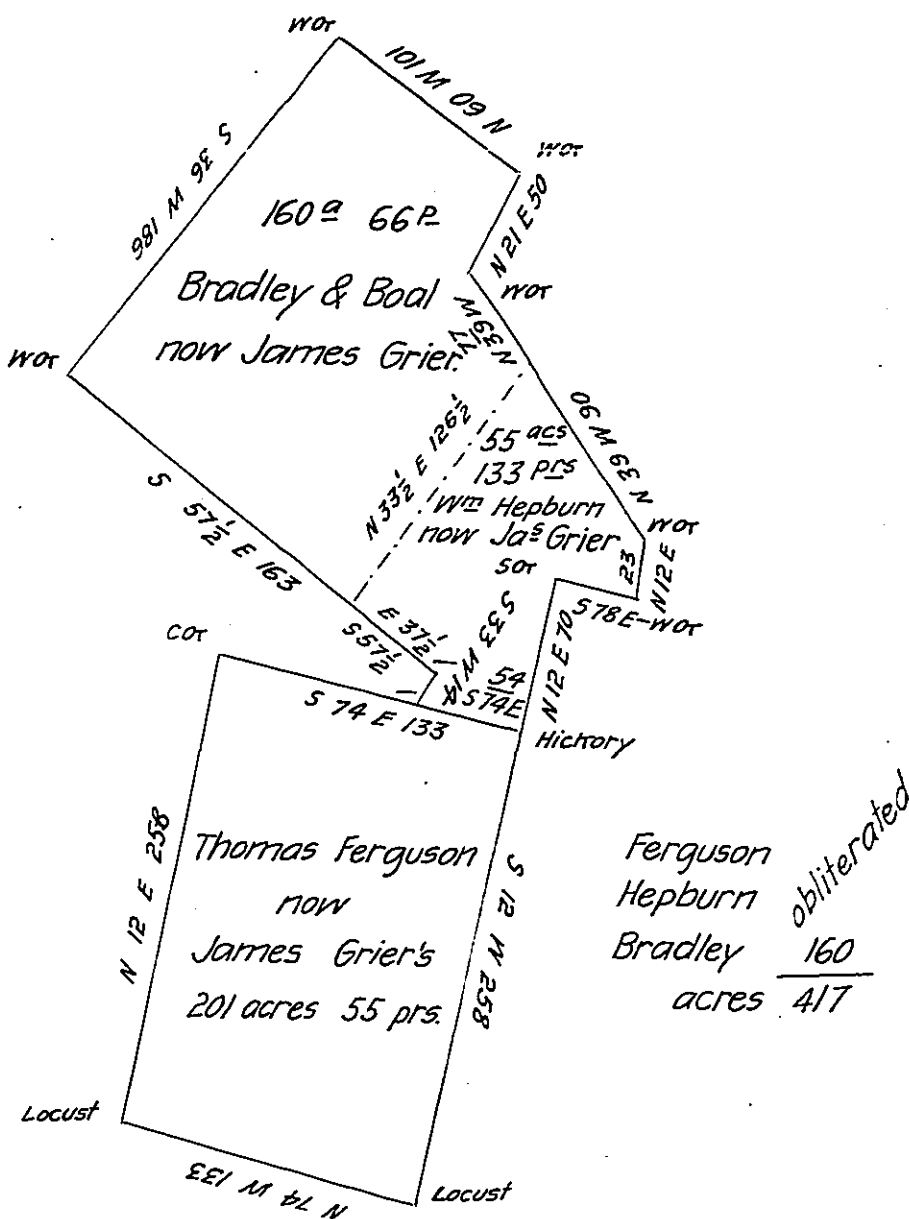


Bradley and Boal Sur-
veyed 5th day of January
1793 on a warrant dated
11th June 1792 numbered 1443
and returned by John Adlum Esq^r

W^m Hepburn Surveyed
5th day of January 1793 on
a warrant dated 11th June
1792 No 1448.



Courses	Dist.	N	S	E	W	mtrs	
o-b ^l	258		2523		53.6	107.2	N 86612.16
N 74 W	133	366			127.8	235.0	S 18200.76
N 12 E	258	2523		53.6		362.8	68411.40 acres
o-b ^l 74 E	133		366	127.8		309.2	169.6) 34205.70 (201-55 -
						255.6	3392
						127.8	2857
						000.0	1696
							206) 11510 (55
							1030
							1210

S 2523	S 127.8	N 235.0	N 309.2
53.6	36.6	36.6	252.3
151.38	7668	14100	9276
7569	7668	14100	6184
o-b ^l 2615	3834	7050	15460
352328	467748	860100	6184
	1352328		78011.16
	18200.76		860100
			N 8661216

IN TESTIMONY that the above is a copy of the original remaining on file in the Department of Internal Affairs of Pennsylvania, made conformably to an Act of Assembly approved the 16th day of February, 1833, I have hereunto set my Hand and caused the Seal of said Department to be affixed at Harrisburg, this twenty-second day of August 1905.

Loac P. Rowley
Secretary of Internal Affairs.